

# OKLAHOMA THE MUSIC TEACHER

THE QUARTERLY NEWSLETTER OF THE OKLAHOMA MUSIC TEACHERS ASSOCIATION

IN THIS ISSUE  
FROM YOUR PRESIDENT  
Page 2

FROM YOUR PRESIDENT-ELECT  
Page 3

CONFERENCE 2013  
• Conference Hotel Information  
Page 4

MEMBERSHIP NEWS  
• IMT Forum  
• Theory Tests Update  
Page 5  
• Auditions Update  
Page 6

COLLEGIATE NEWS  
Page 6

## COMTA CLAVINOVA FESTIVAL!



COMTA HOLDS FIFTH ANNUAL CLAVINOVA FESTIVAL

The Central Oklahoma Music Teachers Association (COMTA) held our Fifth Annual Clavinova Festival at Larsen Music in Oklahoma City on December 1st, 7th and 8th. One hundred sixteen students from eighteen studios participated in our favorite December event! We also had the return of our December Clavinova Ensembles with forty-three students participating in four different ensembles. Terri Hlubek, who has a

passion for technology, ensembles and our students, directed the four groups (Dasher, Dancer, Prancer and Vixen). A huge thanks to Susan Ogilvy who travels up from Dallas to inspire our teachers and students. We are also grateful to Walt Myric of Larsen Music. Walt provides the performance venue and all of the teachers with Clavinovas in their studios. COMTA appreciates all of you for your hard work and dedication to our students.

~ Melissa Johansen, NCTM

# FROM YOUR PRESIDENT

## TERRI HLUBEK, NCTM

Words of advice for the New Year—don't wear heels on a wet floor! I seemed to have wiped out on the wet church floor and broke my foot before my studio Christmas recitals. My husband, Greg, thought that it might be his lucky day. He envisioned himself watching football games on our couch instead of playing studio reception host. Unfortunately for him, canceling recitals is definitely out of the question. All is well!

I had the pleasure of attending the MTNA/OMTA Collegiate/Marilyn Witcher Competitions at OSU, November 2-3. Thank you Heather Lanners and Carol Ann Bell for a job well done organizing the competitions. Some highlights of my weekend were meeting the judge, Jane Solose (University of Missouri-Kansas City), staying at the Atherton Hotel with my husband, and attending Dr. Michael Kirkendall's spectacular piano recital on Saturday evening. Dr. Michael Kirkendall's recital would be the first piano recital that actually captured Greg's attention and left him spellbound!

Our East and West District Conferences were held November 17. Both conferences were a success! At the January Board Meeting, I would like to discuss the possibility of reformatting the District Conferences. Perhaps, we could restructure the conferences to include only the student recitals, and lunch for the teachers? I was a bit concerned to have two OMTA District Conferences on the same date, time, and thirty miles apart. Any ideas and suggestions, opinions, etc., would be welcome.

I hope that you are all enjoying Constant Contact, our new statewide email service. If you do not get the OMTA emails, please send me your new email address. I have been using the emails that you provided MTNA.

I have been discussing with Thomas Labè, our website manager and OMT editor, the possibility of hiring a web designer for a "NEW LOOK" for an even more efficient website. Also, I am looking into "Elbow Space" to get our entry forms filled out and paid for on our website. If you are not on Facebook, now is a good time to explore the possibilities! OMTA now has a Facebook page, thanks to our IMTF Chair, Jennifer Mansour.



Did you realize that OMTA is #3 in the nation in percentage of Nationally Certified teachers? 28.4% of OMTA teachers are Nationally Certified through MTNA! Did you realize that the MTNA National Conference is in Anaheim, California this year at Disneyland—March 9-13? Finally, did you know that MTNA is a participant in the Amazon.com Associates Program? As an

Amazon.com Associate, MTNA receives a five percent commission on purchases whenever customers access the store via MTNA's website at [www.mtna.org](http://www.mtna.org).

The OMTA Board meeting will be January 19th at OBU, in Shawnee. Please let me and/or your local president know of anything you would like addressed at the meeting. I hope that every OMTA member is making plans now for the OMTA State Conference, at OU, from June 6-8, as it promises to be one of our BEST conferences!

Finally, as a New Years Resolution, let's all get MORE involved in OMTA and our Local Associations and embrace change. "Every time you are tempted to react in the same old way, ask if you want to be a prisoner of the past or a pioneer of the future." -Deepak Chopra. Let's work together to realize the potential of all the musical magic we can make together.

# FROM YOUR PRESIDENT-ELECT

## BARBARA FAST, NCTM

**I**gnite Your Teaching: OMTA State Conference, June 6-8, 2013  
University of Oklahoma, School of Music.

Ignite Your Teaching! and plan to attend the 2013 OMTA State Conference to be held June 6-8, 2013 in Norman at the University of Oklahoma. The schedule is developing quickly for an exciting and inspiring conference, with E.L. Lancaster and Gayle Kowalchyk as guest presenters.

Gayle and E. L. are long-time friends of OMTA. From 1979 until 1988 E.L. was Professor of Music at the University of Oklahoma, where he directed the masters and doctoral programs in piano pedagogy. Concurrently, he and his wife, Gayle Kowalchyk, operated a large independent piano studio for pre-college students.



Currently E. L. is Senior Vice President and Keyboard Editor-in-Chief for Alfred Music Publishing and Gayle is Keyboard Editor for Supplementary Piano Publications for Alfred Publishing. Together they bring extensive teaching experience with students of all ages, from young to college-level pianists. In their workshops they will share valuable insights into teaching techniques and materials for working with a wide-range of students with varied interests. Together and individually they will be presenting the following four workshops:

◆ Piano Teaching Then and Now: How Students and Teachers Have Changed in the Last 88 years

Tips and strategies for teaching in the 21st century will be given with an emphasis on music that captivates piano students from the start.

◆ What Can I Teach on Monday? - New Music from Alfred To Ignite and Inspire Your Teaching

Get a head start on planning for your summer and fall teaching with a fast-paced review of the latest piano publications from Alfred.

◆ Chicken Nuggets for the Piano Teacher's Soul

Tales from the "trenches" will be paired with ideas for thriving in the busy world of independent piano teaching.

◆ Can Piano Masterworks Really Ignite a Spark in 21st Century Piano Students?

The session will demonstrate effective practice procedures and focus on ways to teach musicianship through music in a variety of styles.

We are also excited that Alan Chow will be appearing as OMTA's guest artist, presenting a recital and two student master classes. Many OMTA members became acquainted with Alan Chow when he held the position of artist in residence at the University of Arkansas. Currently he serves as Coordinator of the piano area at Northwestern University in Chicago.



ALAN CHOW

Alan is known for his lyricism in performing and his warm and engaging manner when working with students. His own teachers included Menahem Pressler at Indiana University, Sascha Gorodnitzki at the Juilliard School, and Nelita True at the University of Maryland. His awards include the First Prize in the Concert Artists Guild Competition and Audience Favorite Prizes in the Gina Bachauer International Piano Competition. Chow has been a soloist with Hong Kong Philharmonic, National Symphony, Utah Symphony, Oakland Symphony, and Kansas City Symphony Orchestras. His recital engagements include concerts in New York's Alice Tully Hall and throughout the United States, as well as touring Hong Kong, Japan, China, and Taiwan.

Additionally, we're looking forward to the premier work from Dr. Kris Maloy, Director of Jazz Studies and composer from Oklahoma City University, who is OMTA's 2013 commissioned composer. His brass quintet will be performed Friday at the conference.

# CONFERENCE 2013

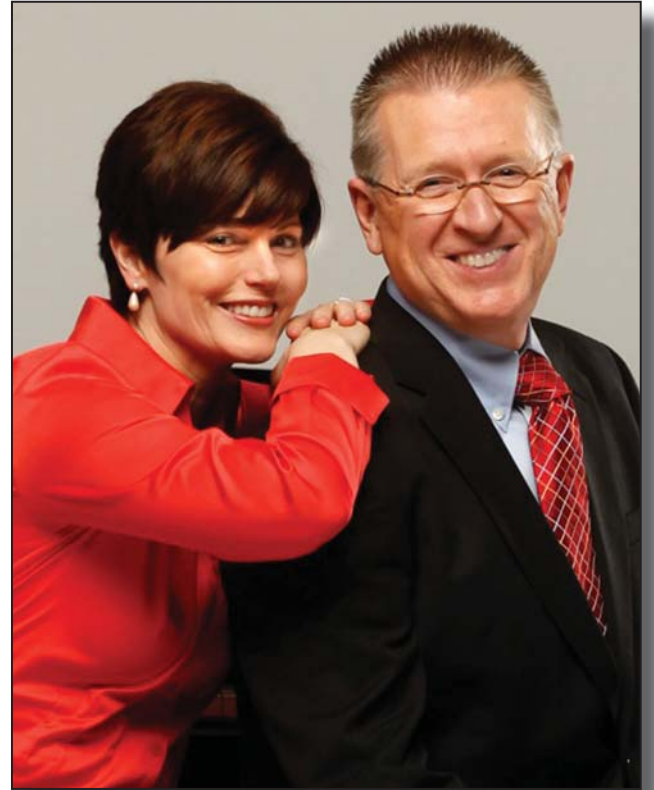
**W**ant to feel like you are attending an MTNA national convention? We are pleased to announce that the new and beautiful Embassy Suites in Norman has been secured for the OMTA conference hotel. As the premier hotel in Norman, it contains an atrium and waterfall in the lounge, coffee shops, and the look and feel of larger hotels. If you have stayed at an Embassy Suites before, you know that each room contains a separate living area and bedroom area, with amenities that include microwave, refrigerator, and Internet. Embassy Suites is also known for their complimentary cooked breakfasts and manager's reception every evening. Pool, whirlpool, and 24/7 fitness center are also included.

We have negotiated the special room rate of \$99.00, excluding applicable taxes and personal room charges. I know this may seem early, but book now as the special conference rate is in effect until May 7, or until the group block sells out, whichever comes first. You can book online at:

<http://embassysuites.hilton.com/en/es/groups/personalized/O/OKCESESPED-20130606/index.jhtml>

PS: I meet friends at Embassy Suites (or just go to relax) by the atrium and waterfall, to feel like I'm "out of Norman and attending a large national convention." So, give yourself a treat, and be sure to book your stay while rooms last!

See you in Norman in June, and Ignite Your Teaching!



*GAYLE KOWALCHUCK AND E.L. LANCASTER*



# MEMBERSHIP NEWS

## INDEPENDENT MUSIC TEACHERS FORUM

What are “pupil saver” pieces you would recommend, works that have motivated and recharged your students?

Carnival in Rio by William Gillock

Trepak by Mark Nevin

Black Boots by Beissert

Hungary (Rhapsody Mignonne) by Koelling

Warrior's Song by Stephen Heller

These are all good literature (though not for beginners), but are accessible and inspiring, and good for "sound" and technique builders. I have used these with the "drooping" pupil and/or with transfers over the years.

Leon Whitesell, DMA, Edmond, OK

### Elementary

Sugar Cookies by David Carr Glover

Silver Bugles by Lynn Freeman Olson

Galloping Ponies by Claudette Hudelson

Touch A Rainbow by Dennis Alexander

### Intermediate

Hoe-Down by Catherine Rollin

Appaloosa Pony by Martha Mier

Toccatina by Susan Ogilvy

Canyons and Waterfalls by Melody Bober

### Advanced

The Firefly by Anton Bilotti

Tarantella by A. Pieczonka

Gitanerias by Ernesto Lecuona

The Flight of the Bumblebee by Rimsky-Korsakoff

Guest Post by Myra Schubert, Bethany, OK

Here's the new question (responses will be printed in the April issue of the OMT):

What special activities do you do to keep your students involved musically in the summer?

Respond by doing one of the following before March 1:

- E-mail me directly at [jmansour3@gmail.com](mailto:jmansour3@gmail.com).

- Discuss the question in your local association meeting and have your secretary e-mail me your answers to the same address above.

- Snail mail your responses to 2200 Morning Star, Edmond, OK 73034

- Or post in our new Facebook group – Oklahoma Music Teachers Association (OMTA). This is a closed group (posts can only be viewed by

~ Jennifer Mansour, NCTM

## JOIN SHAWNEE AREA MTA IN SPONSORING MTNA FOUNDATION FELLOW RON LEWIS

The Shawnee Area Music Teachers Association, in desiring to honor a longtime SAMTA, OMTA and MTNA member, has begun the process of sponsoring Ron Lewis as an MTNA Foundation Fellow with a generous contribution from the local association. Ron has been active in music for many years both in Shawnee and throughout the state of Oklahoma.

Dr. Ronald E. Lewis taught at Oklahoma Baptist University from 1970-2006, served as chair of the keyboard department for many years, and held the Burton Patterson Endowed Professorship of Music. He now works full-time as a registered nurse, while also serving as organist, director of the senior adult choir, and handbell director at First Baptist Church, Shawnee, Oklahoma and as University Organist for OBU. He served Oklahoma Music Teachers Association as Vice President for Local Associations, President-Elect, and President, having had a distinguished career of solo and collaborative recitals and adjudication for many OMTA events. He was the originator of the OMTA Traveling Trophy for highest percentage of local association attendance at the OMTA State Conference. He continues to serve on the OMTA Theory Committee and the OMTA Ethics Committee and was the OMTA Past President Representative to the OMTA Executive Committee from 2010-2012. His degrees are from Ouachita Baptist University, University of North Texas and the University of Oklahoma.

The Shawnee association invites any who would like to contribute to Ron Lewis's MTNA Foundation Fellow to do so online at the MTNA Foundation website, designating any contributions to Ron Lewis' Foundation Fellow fund or by sending a check to the MTNA Foundation, specifying his name in the memo line of your check. You may contact Sandra Meyer, SAMTA President, for more information at: [sgmeyerromta@gmail.com](mailto:sgmeyerromta@gmail.com).

.....

## THEORY TESTS UPDATE

Some points to remember as you prepare your students for the theory tests:

- ◆ This year, beginning with Level 7, scales will be drawn both ascending and descending. The accidentals must be drawn in both directions of the scales.
- ◆ There are a few new terms so check the terminology in each level.
- ◆ The dominant or dominant 7th chord will always be major because the cadence is based on the harmonic minor scale with a raised 7th.
- ◆ The rests must be colored in.
- ◆ The accidentals must be drawn on the same line or space as the note.
- ◆ There are still a few theory tests left from last year. The charge is \$25 (correction from the last issue) which includes postage.

~ Nancy Shelton, NCTM

# MEMBERSHIP NEWS

# COLLEGIATE NEWS

## AUDITIONS UPDATE

**A** Huge Thank You to all of the District Chairs and the Co-Presidents of the East and West District for a successful Junior Competition and District Conference.

There were 35 East District Winners and 28 West District Winners who performed on the District Conference Recitals.

The Division Competition is taking place the weekend of January 12, 13, 2013 in Arkadelphia Arkansas and results will be posted soon. The next event for OMTA is the Senior Competition. Teachers please read the rules carefully to avoid problems with the chairs, the students, their parents and of course the teachers. Please remember the entry fee is \$20 this year for all Competition and Auditions.

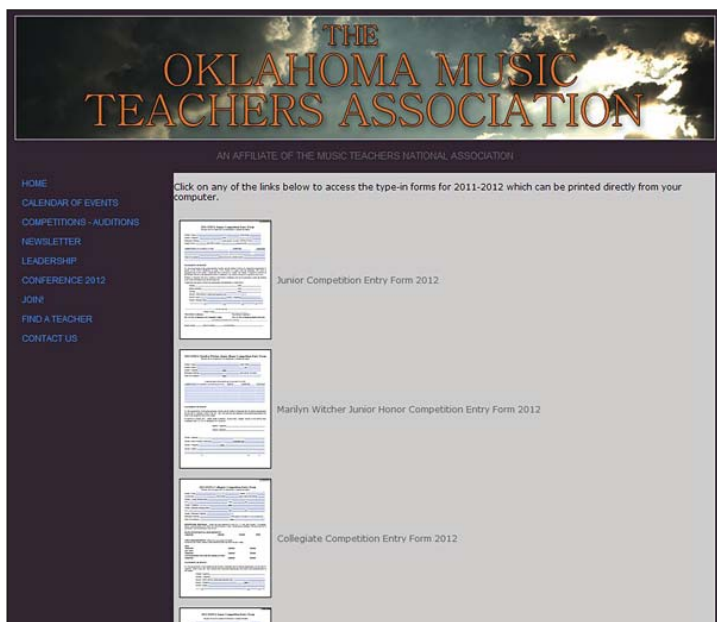
If there are questions please email me and I will answer with as much help as possible.

I look forward to a successful and pleasant year for ALL.

~ Gloria Johnson, NCTM

.....

## TYPE AND PRINT YOUR FORMS ONLINE



Make your audition chair very happy by typing your forms and printing them out. Simply point your browser to:

<http://oklahomamta.org/forms-directory.html>

Here you can access all the updated forms (or go to the individual pages for each event and find the complete information and the forms as well).

## NORTHEASTERN STATE UNIVERSITY HIGH SCHOOL PIANO COMPETITION & FESTIVAL - FEBRUARY 1 & 2

**N**ortheastern State University's annual Piano Competition & Festival will take place on Friday and Saturday, February 1 and 2 on NSU's, Tahlequah campus. This year's guest artist is Joseph Rackers from the University of South Carolina. Rackers is a graduate of the Eastman School of Music where he earned the Doctor of Musical Arts, was awarded the Performer's Certificate. His principal teachers were Natalya Antonova and Raymond Herbert. He is in demand as a jury member for national and international piano competitions, including the Hilton Head International Piano Competition.



JOSEPH RACKERS

The event at NSU includes recitals by Joseph Rackers and NSU professor, Ronald Chioldi, masterclasses, and a young artist competition. Piano students in grades 8 through 12 are eligible. The competition awards are \$250, \$100, and \$50. For more information and a complete list of events and times, please contact Ronald Chioldi at (918) 444-2707 or email at [chioldi@nsuok.edu](mailto:chioldi@nsuok.edu).

# MORE THAN A METHOD

## Premier Piano Course develops...

### Premier Note Readers

**New Notes A and B**  
A 2nd and 3rd up from Low G

**Symphony Hall**  
CD 3949 CM 20

*Swaying gently*

*f* At the sym-phony hall you can hear mu-sic played. I think all the sound has all I could say all day.

*rit.* *ff*

**New Notes A and B** callouts:  
 - **Non-position reading** (pointing to notes in the first staff)

**Student identifies new notes** (pointing to notes in the second staff)

**Other callouts:**  
 - **Name intervals** (pointing to intervals between notes)

**Footnote:** A phrase is a group of notes similar to a sentence. It expresses a musical idea. A longer slur (called a phrase mark) is used to show a phrase. Phrases are usually played legato.

**Footnote:** Press damper pedal and hold to end.

**Lesson Book 1B**

Uses a non-position reading approach that promotes freedom of movement around the keyboard.

### Premier Rhythm Readers

**New Time Signature**  
Common Time: C = 4/4

**New Rhythm**  
In the rhythm below, the stress is on the first quarter note. This note is **syncopated**.

Count: 1 + 2 + 3 + 4 +

**Reveille<sup>®</sup> Boogie**  
CD 3912 CM 6

*Moderate, with energy*

*f* (*1 + 2 +*)

*mp*

*f* (*1 +*)

**New Rhythm reinforced 4 times** (pointing to repeated rhythmic patterns)

**New Rhythm modified** (pointing to a variation of the rhythm)

**Lesson Book 3**

Teaches rhythm in a way that promotes pattern identification.



## Develop Premier Students Today!

Call (888) 21-PIANO, email [keyboard@alfred.com](mailto:keyboard@alfred.com), or visit [premierpianocourse.com](http://premierpianocourse.com) today!

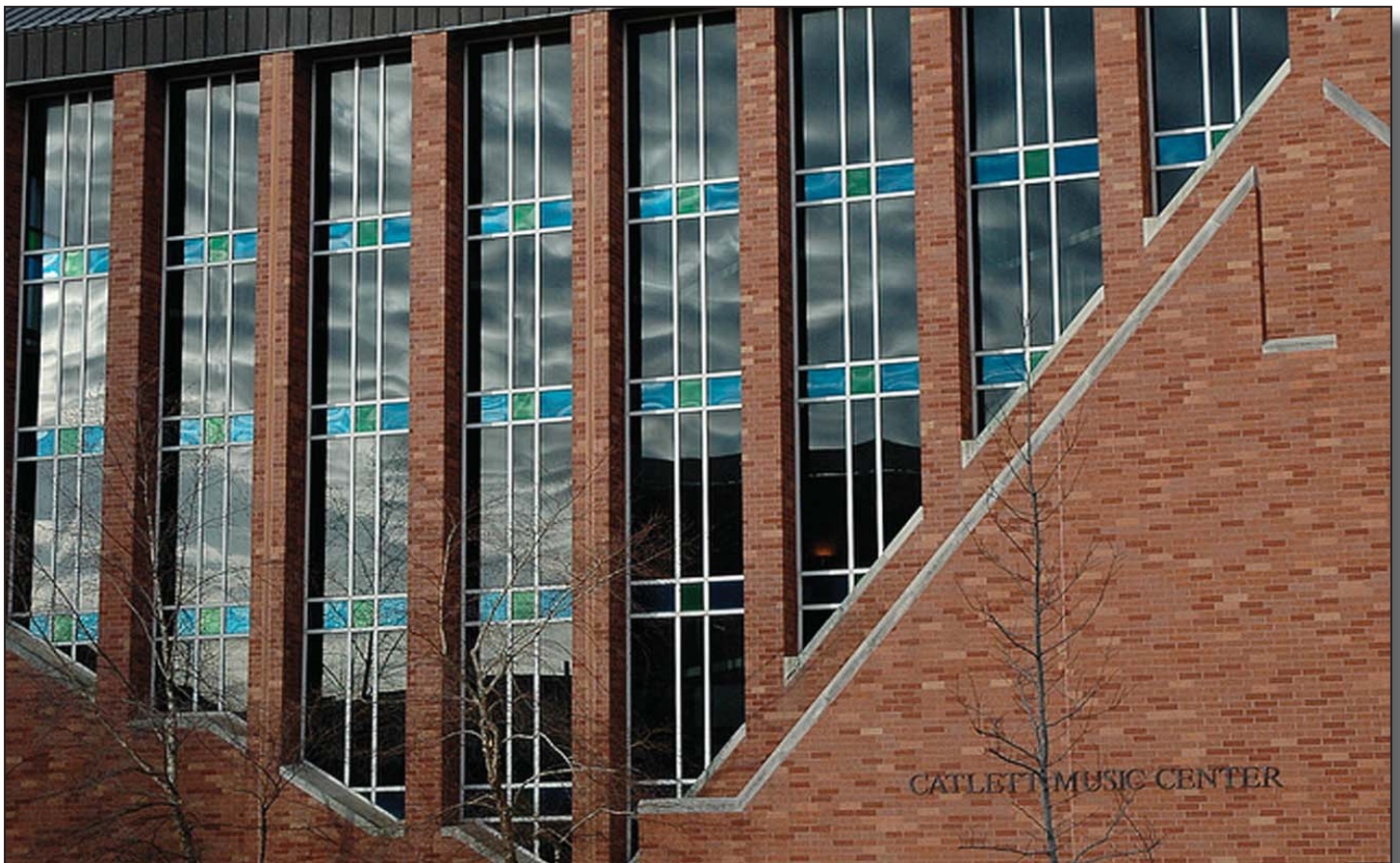




**THE OKLAHOMA MUSIC TEACHER**

Thomas Labé, Editor  
4 Wall Mountain Trail  
Lawton, Oklahoma 73507

Type in and print all your audition and competition forms! Go to: <http://oklahomamta.org/forms-directory.html>



*THE CATLETT MUSIC CENTER AT THE UNIVERSITY OF OKLAHOMA  
SITE OF THE 2013 OMTA CONFERENCE*